



37 Marble Road Byford, WA

 3
  2
  2

GREAT INVESTMENT OPTION

With a long term tenant in place this fully leased residence provides an excellent return, is low maintenance, easy to lease, has zero strata levies and stacks up as a tidy little investment!!

Returning \$570pw with a long lease and excellent tenant, this is a simple 'no brainer' of an investment.

Negative gearing? Retired and looking for regular income from your investment ? then look no further.

These sell with very few days on market so hurry when it's gone it's gone!

From \$559,000

Type : House

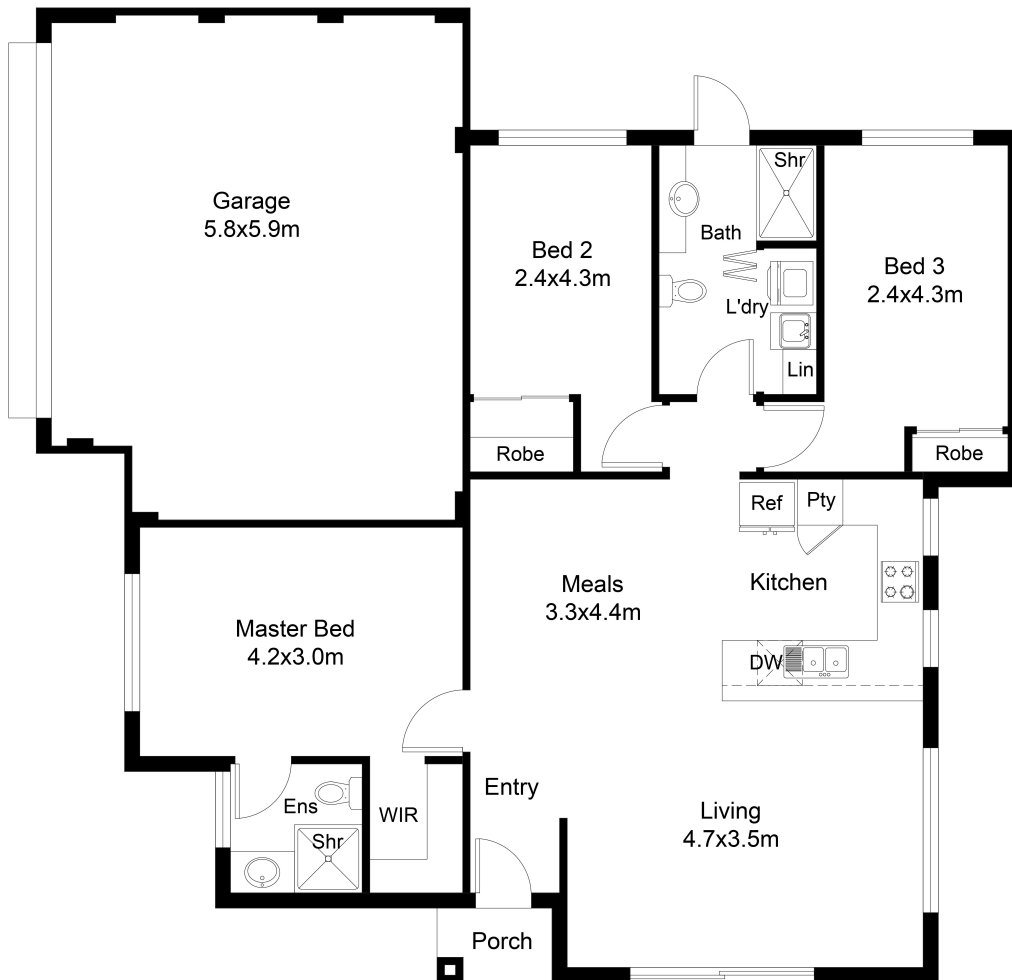
Land : 222 m2

Building Size : 96 m2

Water Rates : \$983.99/year (approx)

Brian Devereux

0418959219



FLOOR PLAN

House : 96.30 sqm
 Garage : 23.24 sqm
 Store : 4.26 sqm
 Porch : 3.99 sqm
 Toal : 127.79 sqm

This floor plan including furniture, fixture measurements and dimensions are approximate and for illustrative purposes only. BoxBrownie.com gives no guarantee, warranty or representation as to the accuracy and layout. All enquiries must be directed to the agent, vendor or party representing this floor plan.

37 Marble Road Byford